

SWT05 SØRVIND

PEGASO S.r.l.

CHARTER



SW105
SØRVIND



Launched in March 2022, the distinct, refined and essential Southern Wind 105 SØRVIND has been designed and built with luxury charter in mind. Featuring the unmistakable elegance of Nauta Design and naval architecture by Farr Yacht Design, SØRVIND has been conceived to ensure sheer sailing pleasure while maintaining all the comfort and amenities that one expects aboard the finest superyacht.



SW105
SØRVIND

SW105 LEGACY: SØRVIND is hull #5 of the successful SW 105 smart-custom series and an evolution from her four sisterships. She has been carefully optimized for the charter market and will offer the ultimate yacht charter experience.

SPORTY & ELEGANT: The Raised Saloon (RS) configuration allows natural light to flood into the interior. The coach roof design and geometries give SØRVIND a sporty and elegant appearance. The interior styling by the Dutch Studio Hermanides creates a minimalistic and modern atmosphere.





FAST AND FUN: SØRVIND is built with a full carbon hull, deck and bulkheads. Weight control has been a high priority with major savings thanks to the titanium deck hardware and FlexiTeek decking. This results in a high performance and reliable yacht that can sail in a wider range of wind conditions, with a reduced dependency on the engine.

TENDER GARAGE: The tender garage and lazarette have been optimized for storage of tender and toys including a William 435 SportJet, sea kayaks, stand-up paddleboards, diving tanks and much more.

SW105
SØRVIND





SW105
SØRVIND

COMFORT & PRIVACY: The interior arrangement is centered around a full beam saloon with eight person dining table and comfortable sofas.

The master cabin and the VIP guest cabin along with a bar area are located forward of the saloon and the two additional twin cabins with separate beds are aft (the twin beds of the starboard cabin can be converted into a double bed). The crew area is further aft with full separation from the guest areas sun.



The large, well lit, saloon is located amidship and features a comfortable conversation area on starboard and the dining area accommodating up to eight guests on port side.

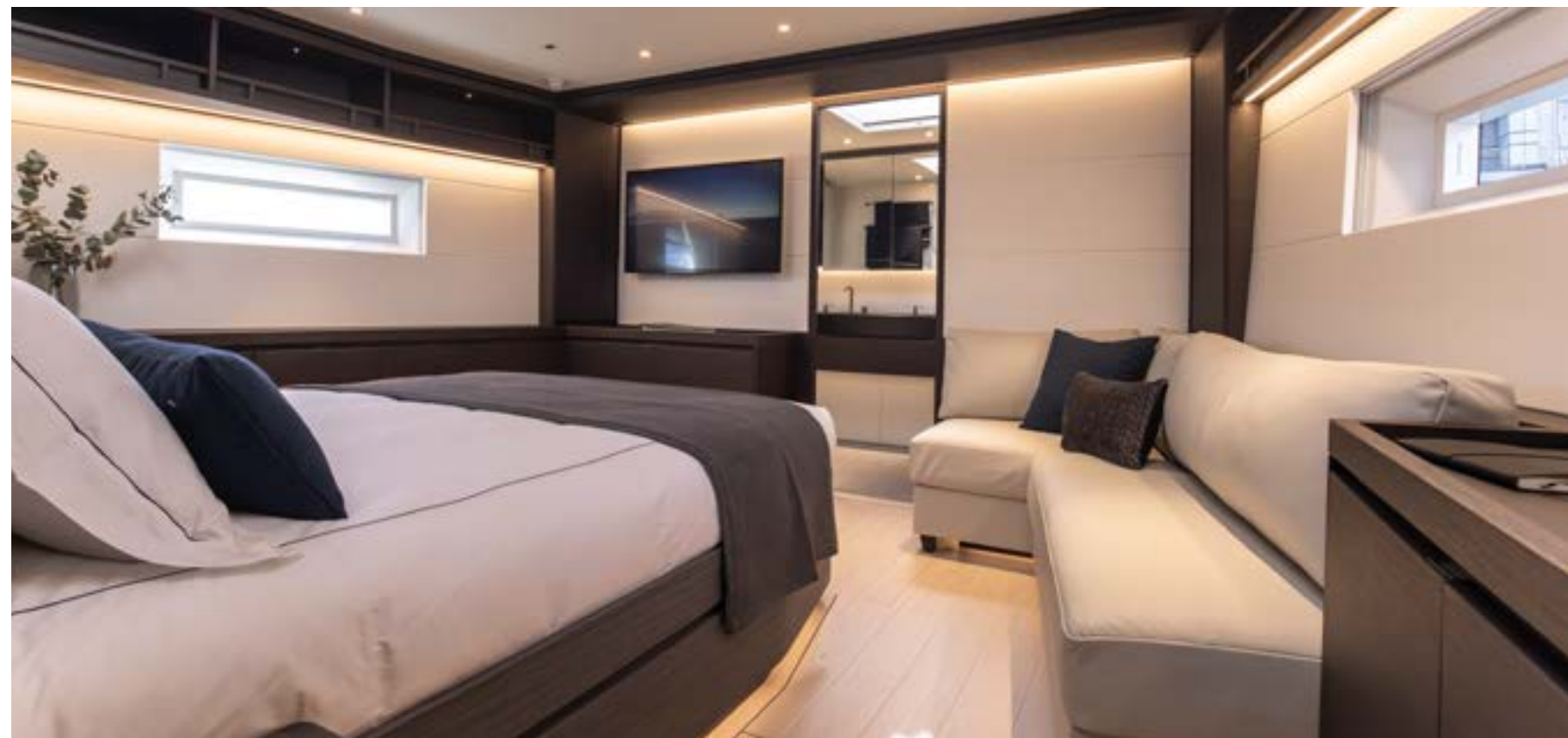


SW105
SØRVIND



MASTER CABIN

Four double guest cabins accommodate up to eight guests and the experienced crew of five are looking forward to welcoming you onboard SØRVIND for an unforgettable sailing holiday.





SW105
SØRVIND

VIP CABIN



TWIN | CONVERTIBLE GUEST CABINS



CREW AREA



KEY FEATURES

- 2023 World Superyacht Award Winner - Best sailing yacht.
- The telescopic keel (3.65m- 5.6m) combines top sailing performance with access to the shallow harbours and anchorages.
- Her single level deck provides comfortable and safe passages from the aft to the forward guest cockpit.
- A dodger, bimini with removable side panels and a boom-extended awning, allow maximum flexibility for protecting and shading the guests cockpit and the sunbathing area.
- The twin beds of the starboard cabin can be converted into a double bed.
- Highly professional and multinational experienced crew of five with a perfect blend of sailing, racing and hospitality experience.

LAYOUT

8 guests in 4 cabins:

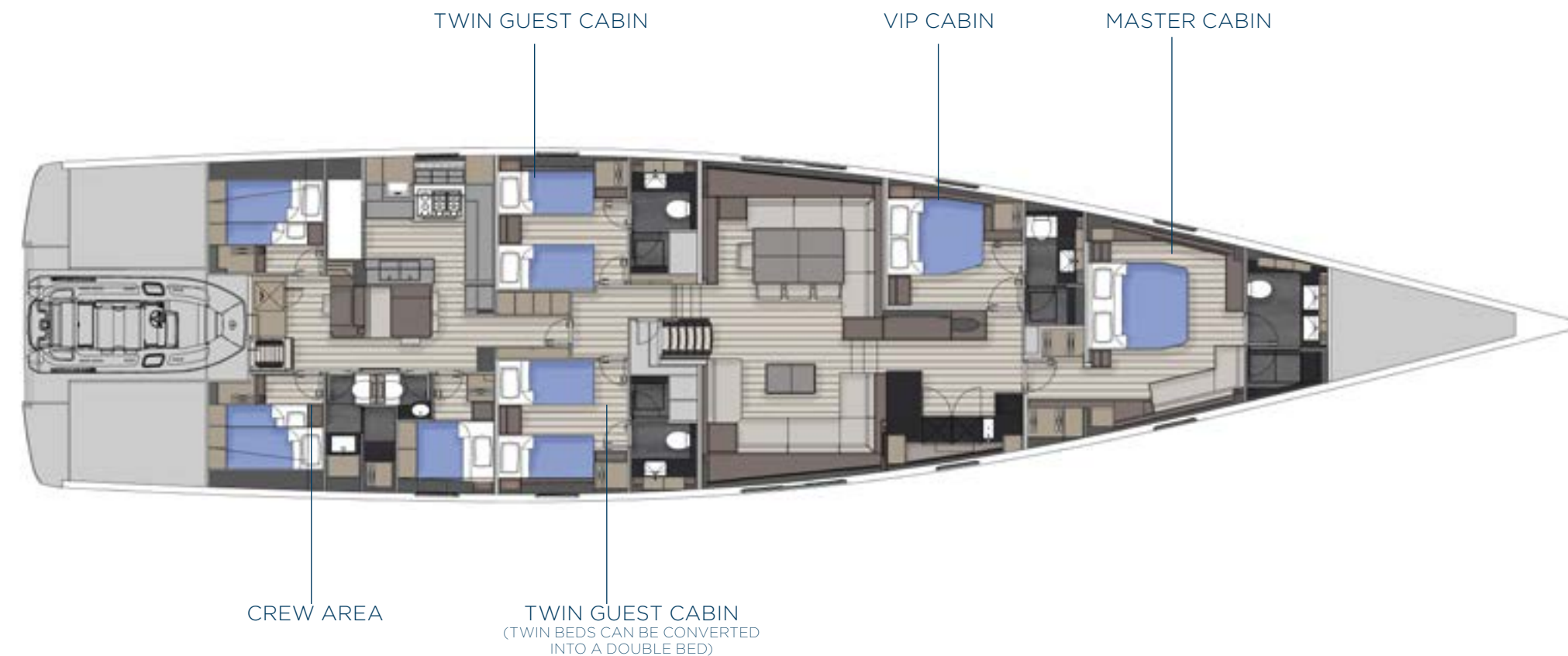
*Guest cabins configuration: 2 Double, 2 Twins
(twin beds of the aft cabin convertible into 1
Double)*

Bed Configuration: 1 King, 1 Queen, 4 Single

5 crew in 3 cabins



SW105
SØRVIND



SPECS

Year of construction: 2022

Flag: Malta

Certification:

RINA Charter Class Compliant

MAIN DATA

LOA: 32.27 m (34.59 m including bowsprit)

LWL: 29.44 m

BEAM (MAX): 7.31 m

DRAFT: 3.65 – 5.6 m (Telescopic keel)

DISPLACEMENT: 69.500 kg

ENGINE: Cummins QSB 6.7MCD 305 hp@2600



DESIGNERS

NAVAL ARCHITECT: Farr Yacht Design

DECK AND INTERIOR DESIGN: Nauta Design

TENDER & TOYS

TENDER:

Williams Sport Jet 435

TOYS:

Seabob F5S

Kayaks

Stand-up paddle boards

Wakeboard

Towing ring

Electric wing foil (2023)

Water skis

Snorkelling gear

Your crew may assist to arrange Scuba dive,

kite surfing sessions and other excursions.



SØRVIND CHASE (OPTIONAL)

MODEL: Windy Blackbird 52 RS (16m)

YEAR: 2016 | 2022 Refit

LOA: 16.1m (52')

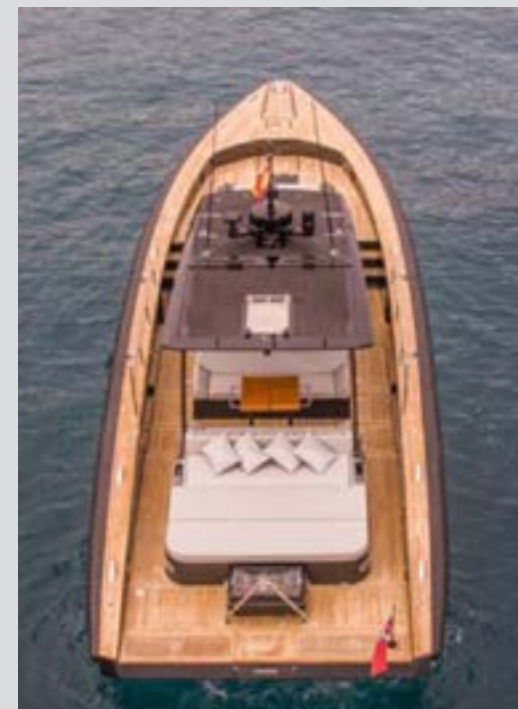
ENGINES: 3 x Volvo Penta IPS 600

CRUISING SPEED: 30kts

MAX SPEED: 40kts

GUESTS: 12 passengers

CREW: 1



Disclaimer

The Company offers the details of this vessel in good faith but cannot guarantee or warrant the accuracy of this information nor warrant the condition of the vessel. A buyer should instruct his agents, or his surveyors, to investigate such details as the buyer desire validated. This vessel is offered subject to prior sale, price change, or withdrawal without notice. This specification/inventory will only form part of the contract when attached to a sales contract that has been signed and agreed by both seller and buyer.

A large sailboat with a black sail is sailing on the ocean. The sail is partially visible on the left side of the image. The boat is white and has a black hull. The ocean is blue and the sky is clear. The text 'SW105 SØRVIND' is overlaid on the left side of the image.

SW105

SØRVIND

PEGASO

S.r.l.

Salita Dinegro 7/1, 16123
Genova, Italy

Ph. +39 010 570 4035
charter@pegasoyd.com